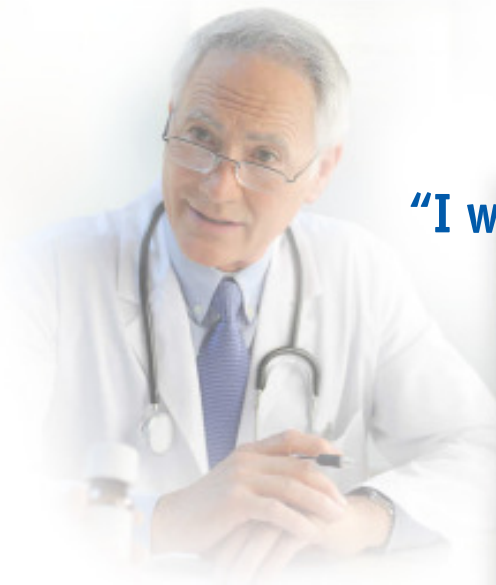


22 years of Service



Feel the Difference



“I want to deal with people who are dedicated to providing me with total solution”



Piston rings imported from USA
(Vacuum Pumps only)



Dr. Frank

Oilfree Air Compressors & Vacuum Pumps

Reciprocating Oil Free Air Compressor

Now you can say good-bye to...

- Foundation
- Site Engineering
- De-Scaling Nightmares
- Maintenance Headaches

Light weight piston & teflon rings

Special design light weight piston result in lesser inertia forces resulting in increased power savings and the ceramic filled teflon piston rings are higher wear resistant and hence have longer life.

One piece bearing suited for near life time operation

Shrunk fit bearings ensure proper alignment & clearance thereby

reducing wear and tear. They have very high load bearing capacity. Ideally suited for high pressure piston compressors.

Overhung crank shaft for easy maintenance

Twin sleeve bearing on the crankshaft at the flywheel side to take the weight of the belt wheel. It is very easy to repair at customer site.

Advanced Concentric disc valve technology

Manufactured on computerised SPMs, the perfect concentricity and flatness provides close tolerances and ensures an aerodynamic flow for low resistance. All of which means higher reliability, least valve losses & power savings.



OF - 30S to 100S



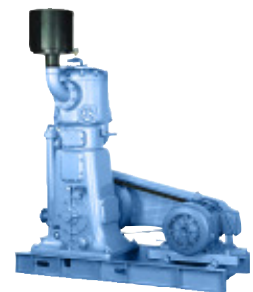
OF - 150B to 200B

| MODEL | Piston Displacement | | Free Air Delivery | | Motor Power | | Compressor RPM | Tank Capacity LITRES |
|---|---------------------|-------|-------------------|------|-------------|------|----------------|----------------------|
| | LPM | cfm | LPM | cfm | HP | Kw | | |
| Direct Driven (Maximum Pressure - 7 kg/cm ² 102 PSI, Single Stage, 230V / 1 Ph / 50 Hz) | | | | | | | | |
| OF - 7.5D | 80 | 2.82 | 45 | 1.58 | 0.75 | 0.54 | 1440 | 30 |
| OF - 10D | 120 | 4.23 | 68 | 2.40 | 1.00 | 0.75 | 1440 | 30 |
| OF - 15D | 205 | 7.23 | 101.9 | 3.6 | 1.50 | 1.10 | 1440 | 50 |
| OF - 30DT | 410 | 14.4 | 203.8 | 7.2 | 3.00 | 2.20 | 1440 | 110 |
| Belt Driven (Maximum Pressure - 8 kg/cm ² 116 PSI, Single Stage, 415V / 3 Ph / 50 Hz) | | | | | | | | |
| OF - 30S | 300 | 10.5 | 204 | 7.2 | 3 | 2.20 | 440 | 200 |
| OF - 50S | 493 | 17.4 | 410 | 14.5 | 5 | 3.70 | 750 | 220/500 |
| OF - 75S | 759 | 26.8 | 606 | 23.0 | 7.5 | 5.50 | 500 | 500 |
| OF - 100S | 1022 | 36.10 | 816 | 29.0 | 10.0 | 7.50 | 660 | 500 |
| Belt Driven (Maximum Pressure - 10 kg/cm ² 145 PSI, Two Stage, 415V / 3 Ph / 50 Hz) | | | | | | | | |
| OF - 150B | 1790 | 63.2 | 1377 | 48.6 | 15 | 11.6 | 600 | 500V |
| OF - 200B | 2235 | 78.9 | 1720 | 60.7 | 20 | 14.8 | 725 | 500V |

Water Cooled Vertical Oilfree Compressor

They have been designed to grant the best performance, trouble free operation, long life and of course the oilfree dry and hygienic compressed air is required by the hospital or the pharmaceutical. Our compressors have been made to meet these expectation through a constant attention.

| MODEL | Power HP | Comp. rpm | Piston Displacement | Free Air Delivery cfm | Maximum Working Pressure | |
|--------|----------|-----------|---------------------|-----------------------|--------------------------|------|
| | | | cfm | | kg/cm ² g | psig |
| CT7x5V | 30 | 750 | 164 | 110 | 8.8 | 125 |
| CT8x5V | 40 | 750 | 215 | 143 | 7.00 | 100 |
| CT8x7V | 50 | 650 | 260 | 180 | 9.50 | 135 |



Scroll Oilfree Air Compressors

The air is sucked in from the suction mouth at the outside of the fixed scroll. The air enclosed in the compressed space is compressed towards the center when the compression chamber is becoming smaller due to the rotation movement. The compressed space becomes smallest in the center, and the air compressed to the highest limit is squeezed out from the central exhaust port.



| Model | Scroll Block | Motor HP | Flow cfm | Pressure Kg/cm ² | Noise db | Tank Capacity Litres | Weight kgs |
|------------|--------------|----------|-----------|-----------------------------|----------|----------------------|------------|
| OS 3/220 | 1 | 3 | 8.5/7.4 | 8/10 | 64 | 220 | 155 |
| OS 5/270 | 1 | 5 | 15/12 | 8/10 | 67 | 270 | 240 |
| OS 7.5/270 | 1 | 7.5 | 22.5/16.2 | 8/10 | 69 | 270 | 245 |
| OS 10/270 | 2 | 10 | 30/23 | 8/10 | 67 | 270 | 265 |
| OS 15/270 | 2 | 15 | 45/32 | 8/10 | 68 | 270 | 275 |
| OS 20/Base | 3 | 20 | 59/46 | 8/10 | 69 | Base | 515 |
| OS 30/Base | 4 | 30 | 88/69 | 8/10 | 70 | Base | 580 |

Reciprocating Piston Vacuum Pumps

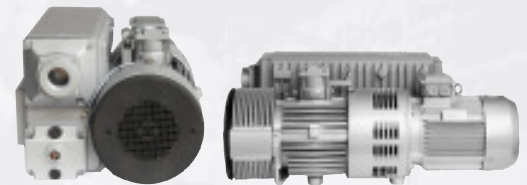


Piston rings imported from USA

| MODEL | Piston Displacement | | Vacuum (Hg) | | Motor Power | | Compressor | Tank Capacity LITRES |
|---|---------------------|-------|-------------|-----|-------------|------|------------|----------------------|
| | LPM | cfm | Inch | mm | HP | Kw | RPM | |
| Belt Driven (Single Stage 230V 1 Ph / 415V / 3 Ph / 50 Hz) | | | | | | | | |
| Vacuum - 10V | 120 | 4.2 | 29 | 736 | 1 | 0.74 | 850 | 110 |
| Vacuum - 285V | 492 | 17.4 | 29 | 736 | 2 | 1.48 | 850 | 200 |
| Vacuum - 294V | 878 | 31.0 | 29 | 736 | 3 | 2.20 | 850 | 220/500 |
| Vacuum - 305V | 1473 | 52.0 | 29 | 736 | 5 | 3.70 | 850 | 270/500 |
| Vacuum - 57V | 2493 | 88.0 | 29 | 736 | 7.5 | 5.50 | 850 | 500 |
| Vacuum - 65V | 3740 | 132.0 | 29 | 736 | 10 | 7.40 | 850 | 1000V |

Rotary Vane Vacuum Pumps

Rotary vane vacuum pumps are designed for silent operations & continuous operation. The built-in exhaust filter ensures an oil-mist free exhaust gas over the entire range of operating pressures from atmospheric pressure to ultimate pressure.



| Model | Piston Displacement | | vacuum (Hg) | | Motor Power | | Vaccum Pump (rpm) | Nosie dB (A) | Tank Cap |
|--------|---------------------|-----|-------------|------|-------------|------|-------------------|--------------|-----------|
| | LPM | cfm | Inch | mm | HP | (Kw) | | | |
| SV-063 | 1050 | 37 | 0.2 | 5.1 | 3 | 2.2 | 1400 | 68 | 270 / 500 |
| SV-160 | 2667 | 94 | 0.2 | 5.1 | 5.5 | 4.0 | 1440 | 74 | 270 / 500 |
| SV-200 | 3333 | 118 | 0.2 | 5.1 | 7.5 | 5.5 | 1440 | 74 | 500 |
| SV-300 | 5000 | 176 | 0.03 | 0.82 | 10 | 7.5 | 1440 | 70 | — |
| SV-630 | 10667 | 377 | 0.03 | 0.82 | 20 | 15 | 970 | 75 | — |

Desiccant Air Dryers

The latest technology in Desiccant Air Dryers offers total cleaning and drying solution for lubricated as well as non-lubricated Compressors. Coalescing filters (boro silicate micro glass fibres) assure maximum removal of oil and liquid moisture upto 0.3 microns. Compressed air at -40°C dew point.

Salient features : • Microprocessor Controller • Pre-filter rating 0.3 microns (coalescer) • Shuttle valve for Low Pressure drop • All Aluminium resist oxidation & scale formation • Dewpoint better than -40°C • Design Patented

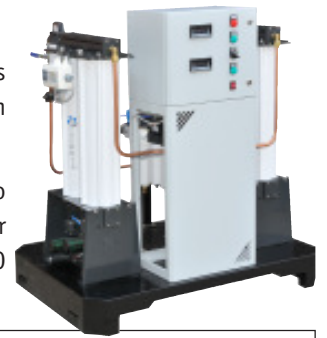


| Model | Flow cfm | End Connection BSP | Dimensions (mm) | | | Weight KGS | Recommended Accessories | |
|-------------------|----------|--------------------|-----------------|-----|-----|------------|-------------------------|-----------------|
| | | | H | W | D | | Pre filter (1) | Post filter (2) |
| Dryspell 10 | 10 | ½" | 600 | 280 | 200 | 11 | T 24 P | T 24 Y |
| Dryspell Plus 10 | 10 | ½" | 1038 | 330 | 150 | 21 | T 24 P | T 24 Y |
| Dryspell Plus 20 | 20 | ½" | 963 | 371 | 213 | 29 | T 100 P | T 100 Y |
| Dryspell Plus 30 | 30 | ½" | 1227 | 371 | 213 | 39 | T 100 P | T 100 Y |
| Dryspell Plus 45 | 45 | ½" | 999 | 497 | 313 | 49 | T 100 P | T 100 Y |
| Dryspell Plus 60 | 60 | 1" | 1192 | 523 | 313 | 61 | T 100 P | T 100 Y |
| Dryspell Plus 100 | 100 | 1" | 1603 | 439 | 372 | 106 | T 250 P | T 250 Y |

Medical Air Dryer

Dryspell medical dryers delivers a dewpoint of +2°C as mandated by **NFPA 99**. The dryspell medical dryers operates with the principle of Pressure Swing Adsorption, hence removes more moisture than a refrigeration air dryers, and it delivers moisture free dry air consistently irrespective of flow variation.

Based on medical application criticality, the package comes with one working and one stand by dryers. So there is no need to stop the air dryers for maintenance. Purge saving system saves purge air upto 60% for a typical hospital load of 30% to 40%. Dewpoint and CO monitor enables to monitor dewpoint and CO levels as mandated by **NFPA 99**.



| Model | Flow cfm | End Connection BSP | Dimensions (mm) | | |
|-----------|----------|--------------------|-----------------|------|------|
| | | | H | W | D |
| TBAS 10 | 10 | 1/2" | 600 | 840 | 600 |
| TBAS 20 | 20 | 1/2" | 600 | 1050 | 780 |
| TBAS 30 | 30 | 1/2" | 810 | 1050 | 780 |
| TBAS 45 | 45 | 1/2" | 1055 | 1050 | 780 |
| TBAS 60 A | 60 | 1" | 1250 | 1250 | 855 |
| TBAS 100 | 100 | 1" | 1540 | 1245 | 900 |
| TBAS 200 | 200 | 1 1/2" | 1540 | 1350 | 1300 |



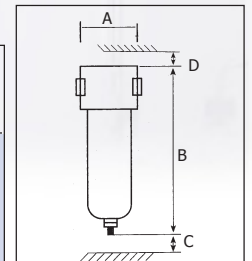
Submicron Filters

Contaminants in unfiltered compressed air eventually have disastrous effect on the end products. To increase the performance of pneumatic tools these contaminants need to be filtered periodically.

Oil and water are present both in liquid and vapour state. Coalescing filters with filter media (boro silicate micro glass fibres) remove liquid contaminants.

Salient features : • Coalescing filters • Aluminium Pressure Die Cast Housing • Coloured Element • Differential Pressure Indicator / Gauge • Internal Drain / External Drain

| Model | Element Grade | Drain Type | Pipe Size BSP/ NB | Flow Rate (scfm) | Max Working Pressure kg/cm ² | Housing Dimensions (mm) | | | | Weight (kgs) |
|-------|---------------|------------|-------------------|------------------|---|-------------------------|-----|-----|---|--------------|
| | | | | | | A | B | C | D | |
| T 100 | P/X/Y/A | IA / EA | 1/2" | 60 | 16 | 96 | 237 | 150 | - | 1.5 |
| T 250 | P/X/Y/A | IA / EA | 1" | 150 | 16 | 117 | 465 | 300 | - | 3.5 |
| T 600 | P/X/Y/A | IA / EA | 1 1/2" | 350 | 16 | 117 | 530 | 425 | - | 4 |



Specification

Element Grade

| Description | P | X | Y | A |
|--------------------|------------------------|--------------------------|---------------------------|----------------------------|
| Filter Element | Borosilicate | Borosilicate | Borosilicate | Activated Carbon |
| Particle Removal | 5 (Micron) | 1 (Micron) | 0.01 (Micron) | 0.01 (Micron) |
| Max. Oil carryover | 5 (mg/m ³) | 0.5 (mg/m ³) | 0.01 (mg/m ³) | 0.003 (mg/m ³) |

Bacteria Filters

Our bacteria elements are fully imported from Taiwan and the life of the element is very high. Each membrane filter element has been individually for integrity by using an air diffusion test.

| Model | Pipe Size BSP | Flow rate (cfm) | Working Pressure (Kg/cm ²) | Filter Rating |
|---------|---------------|-----------------|--|---------------|
| BAC-50 | 1" | 50 | 16 | 0.2 microns |
| BAC-100 | 1" | 100 | 16 | 0.2 microns |



Frank Technologies Pvt. Ltd.,

SF No.570/4A-4B, Kurudampalayam, K. Vadamadurai Post,
Coimbatore - 641 017. India. Telefon : +91-422-2646490, 4050900
Email : sales@frankcompressors.com
Website : www.frankcompressors.com

Sales & Service : • Chennai 95009 85866, 98946 08584

- Madurai 95009 00042 • Bangalore 96007 99946
- Cochin 98946 09111 • Hyderabad 95979 03999
- Mumbai 96296 19388 • Kolkata 94889 42683
- Delhi 96006 84777